



EARTH DAY!



SCAVENGER HUNT

CLUE 1

Reduce, reuse, and recycle are words that we all know. We have to save the planet so we can live and grow. At the stone building with a special historical plaque, is the letter you'll need to attack. Used for meetings and for shows, the small cottage has stories no one knows.



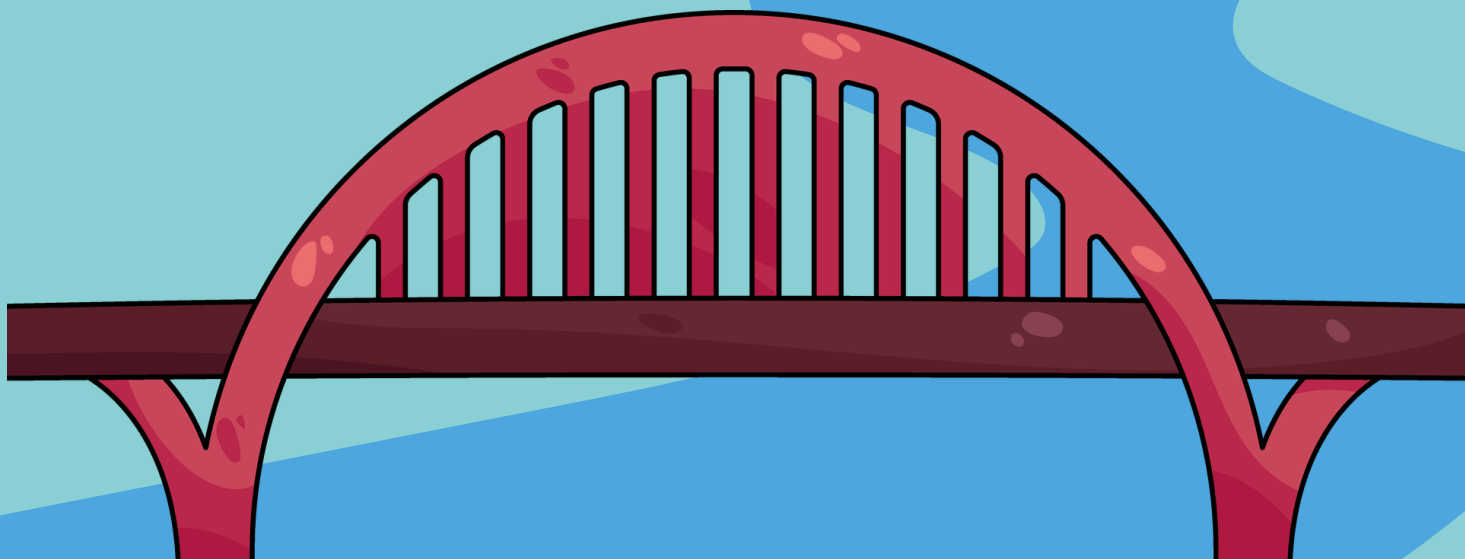
CLUE 2

In the garden you pull the weeds, then dig a hole and plant the seeds. Cover them up and water them too, watch them grow in front of you. The next clue for you to find, is where the community gardeners toil and grind. They grow fruits, veggies and occasionally weeds, to share with their friends and donate to those in need.



CLUE 3

During the holidays, this park sparkles bright, people drive from miles to see such a sight. Under the big tree by the lake sits your next clue, maybe you'll see some turtles and a beaver or two.



CLUE 4

Steps with poems are this park's shining star, but a beautiful sundial isn't too far. Another Earth Day letter you will discover, so grab your buddy and see what you can uncover. Your journey takes you through a neighborhood, so to the residents please be good.



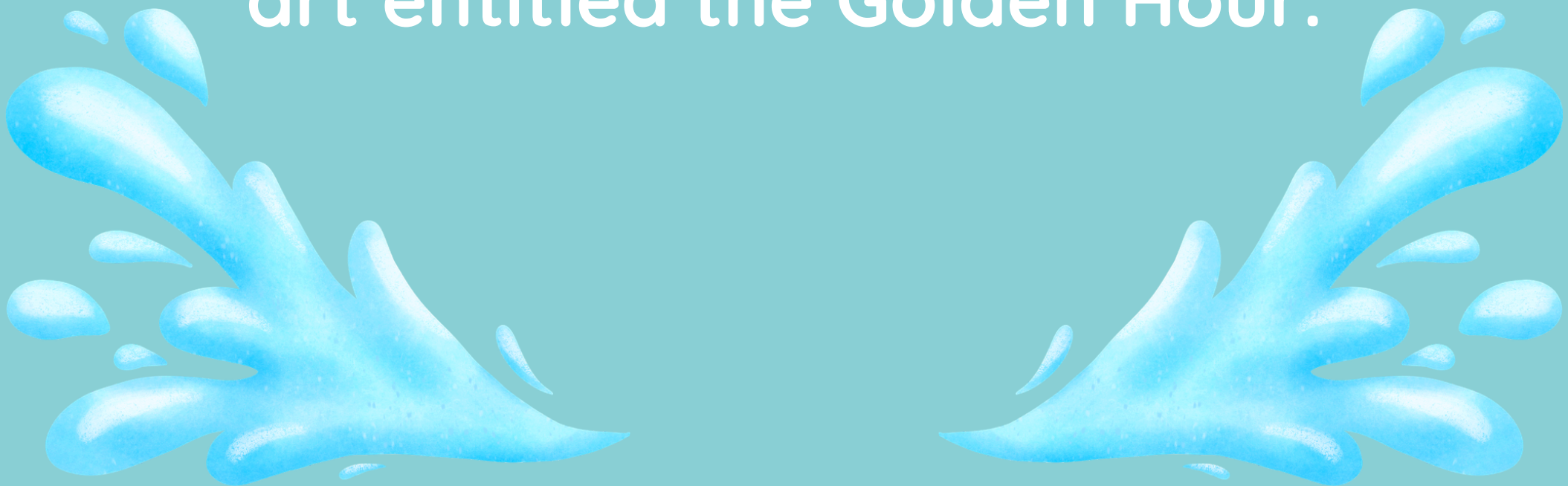
CLUE 5

Named after a former Mayor, this park brings residents out of their lairs. It is not uncommon to even see them walking with their four-legged companions in pairs. Two sculptures are the main attraction here, see if you can find your sign somewhere nearby.



CLUE 6

Water, water everywhere, to wash my hands and wash my hair. Water is a very precious resource, so keeping it clean is important, of course! Addison stores its water in towers so high, they reach many stories into the sky. The next letter you seek you'll find at a tower, by a work of art entitled the Golden Hour.



CLUE 7

Located in a meadowy neighborhood. Your next letter will inspire you to do some good. If you see kids playing be sure to say hello, this park is a central place for them to learn and grow.



CLUE 8

At the top of this sculpture is a metal ball. That can be seen for miles and admired by all. Held up by two pillars that keep it steady, your clue will be waiting around it when you are ready

